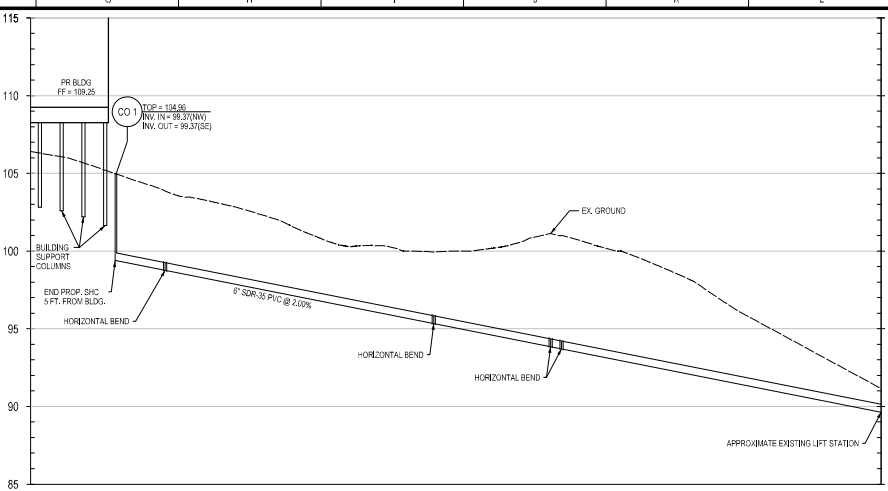
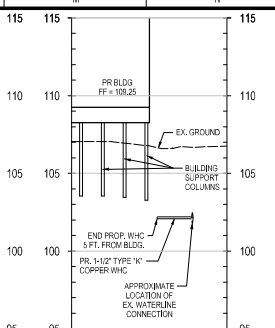


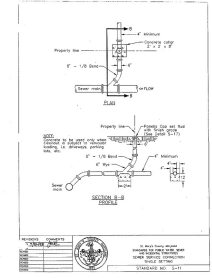
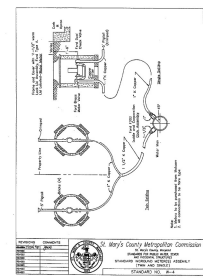
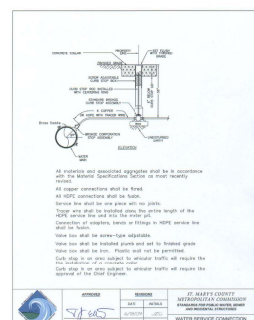
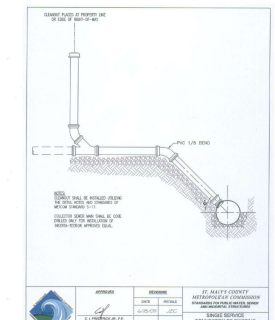
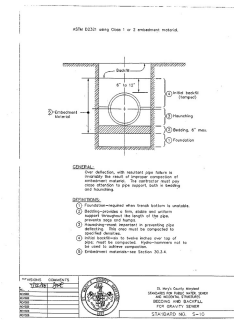
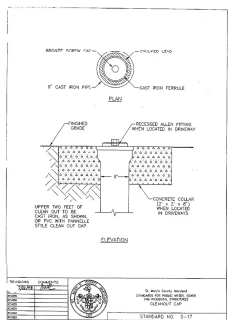
WATER & SEWER PLAN
SCALE: 1"=40'



PROPOSED SHC PROFILE
SCALE: 1"=4' VERT.
1"=40' HORIZ.



PROPOSED WHC PROFILE
SCALE: 1"=4' VERT.
1"=40' HORIZ.



MSS UTILITY NOTE
INFORMATION CONCERNING EXISTING UNDERGROUND UTILITIES WAS OBTAINED FROM AVAILABLE RECORDS. THE CONTRACTOR MUST DETERMINE THE EXACT LOCATION AND DEPTH OF ALL EXISTING UTILITIES AND UTILITY CROSSINGS BY DIGGING TEST TRENCHES. WELL BEYOND THE SCOPE OF THE PLANS FOR CONNECTION CONTRACT. MISS UTILITY AT 145-25777 40 HOURS PRIOR TO THE START OF CONSTRUCTION. IF CLEARANCES ARE LESS THAN 18\"/>

OWNER/DEVELOPER/APPLICANT
THE BOARD OF COUNTY COMMISSIONERS FOR ST. MARY'S COUNTY MARYLAND
P.O. BOX 585
LEONARDTOWN, MARYLAND 20650
PHONE: 301-650-2400
JAMES M. GOTSCH, P.E.

PROFESSIONAL CERTIFICATION
I HEREBY CERTIFY THAT THESE DOCUMENTS WERE PREPARED OR APPROVED BY ME AND THAT I AM A DULY LICENSED PROFESSIONAL ENGINEER UNDER THE LAWS OF THE STATE OF MARYLAND.
LICENSE NO. 25538 EXPIRATION DATE: 7/14/2024



WATER & SEWER PLAN, PROFILE & NOTES

CONCEPT SITE PLAN
ST. MARY'S COUNTY
MODULAR UNIT ADDITION
THIRD (3rd) ELECTION DISTRICT, ST. MARY'S COUNTY, MARYLAND

SOLTESZ, INC.
Rockville, MD
Leesburg, VA
Leontown, VA
Proctorville, OH
Soltesz DC, LLC

WALDORF OFFICE
401 Post Office Road, Suite 103
Waldorf, MD 20692
P. 301.870.2166 F. 301.870.2884
www.soltesz.com

DATE: JULY 2020	CAD STANDARDS VERSION: V8 - 2000
DESIGNED: BTS	TECHNICAL: BTS
NO. _____	REVISIONS _____ BY _____ DATE _____
CHECKED: MRC	

NO.	REVISIONS	BY	DATE

The official of this drawing document was prepared by Soltesz, Inc. (SOLTESZ). This document was not obtained directly from SOLTESZ and/or their personnel electronically. SOLTESZ cannot guarantee the unmodified changes and/or alterations were not made by others. The availability of this information cannot be guaranteed. SOLTESZ, Inc. reserves the right to make changes to this information without notice.