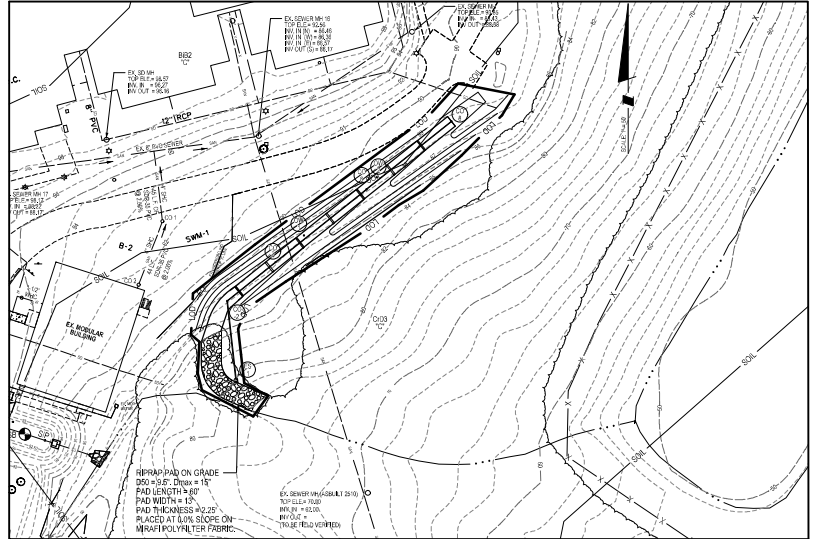
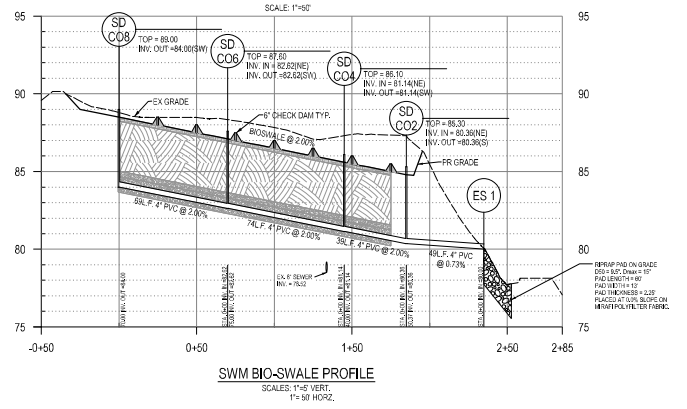


**SITE LAYOUT for CHILD CARE FACILITY**  
SCALE: 1"=50'



**STORM WATER MANAGEMENT for CHILD CARE FACILITY**



**SWM BIO-SWALE PROFILE**  
SCALE: 1"=5' VERT.  
1"=50' HORIZ.

The official of this drawing document was prepared by Soltesz, Inc. (SOLTESZ). If this document was not obtained directly from SOLTESZ, the user acknowledges that SOLTESZ cannot guarantee the accuracy of the information contained herein. SOLTESZ, Inc. is not responsible for any errors or omissions in this drawing document. SOLTESZ, Inc. is not responsible for any errors or omissions in this drawing document. SOLTESZ, Inc. is not responsible for any errors or omissions in this drawing document.

**SOLTESZ, INC.**  
WALDORF OFFICE  
401 Post Office Road, Suite 103  
Waldorf, MD 20692  
P. 301.870.2166 F. 301.870.2884  
www.soltesz.com

Rockville					
Lanham					
Waldorf					
Leonardtown					
Protonick					
Soltesz DC, LLC					
NO.	REVISIONS	BY	DATE		
101					
DATE: JULY 2020	CAD STANDARDS REFERENCE: V8 - 2000				
DESIGNED: BTS	TECHNICAL: BTS	CHECKED: MRC			

**MSS UTILITY NOTE**  
INFORMATION CONCERNING EXISTING UNDERGROUND UTILITIES WAS OBTAINED FROM AVAILABLE RECORDS. THE CONTRACTOR MUST DETERMINE THE EXACT LOCATION AND DEPTH OF ALL EXISTING UTILITIES AND UTILITY CROSSINGS BY DIGGING TEST PIT(S) AND, WELL IN ADVANCE OF THE START OF CONSTRUCTION, CONTACT "MISS UTILITY" AT 1-800-457-7441 40 HOURS PRIOR TO THE START OF CONSTRUCTION. IF CLEARANCES ARE LESS THAN SHOWN, THE USER SHALL NOTIFY THE ENGINEER. IF CLEARANCES ARE LESS, CONTACT THE ENGINEER AND THE UTILITY COMPANY BEFORE PROCEEDING WITH CONSTRUCTION. CLEARANCES LESS THAN NOTED MAY REQUIRE REVISION TO THE PLAN.

<b>OWNER/DEVELOPER/APPLICANT</b>	MAP: 127	GRID: 5
THE BOARD OF COUNTY COMMISSIONERS FOR ST. MARY'S COUNTY MARYLAND P.O. BOX 585 LEONARDTOWN, MARYLAND 20650 PHONE: 301-462-0400 JAMES W. GOTSCH, P.E.	LOADING CATEGORY: IO	WAS CATEGORY: W-1 (S-1)
	TALK MAP / PARCEL: 127 / PID 503	GRID: 5
	SEC DATA: HORIZONTAL: NAD 83 UTM VERTICAL: NAVD 83	AREA / PERIM: 213 / 110

**PROFESSIONAL CERTIFICATION**  
I HEREBY CERTIFY THAT THESE DOCUMENTS WERE PREPARED OR APPROVED BY ME AND THAT I AM A DULY LICENSED PROFESSIONAL ENGINEER UNDER THE LAWS OF THE STATE OF MARYLAND.  
LICENSE NO. 95358 EXPIRATION DATE: 3/14/2024

**STORMWATER MANAGEMENT PLAN, PROFILES & DETAILS**

**CONCEPT SITE PLAN  
ST. MARY'S COUNTY  
MODULAR UNIT ADDITION**

THIRD (H-1) ELECTION DISTRICT, ST. MARY'S COUNTY, MARYLAND

PROJECT NO. 3741-01-00

DATE: 5/9/2024

SCALE: 1"=40'

CONCEPT SWM PLAN  
SHEET 4 OF 10